



\* £265,000 - £290,000 Price Guide \* No Onward Chain \* Generous two bedroom second floor flat featuring an open-plan living area, a Juliet balcony and secure off-street parking within a gated car park. Conveniently situated in a central location, offering easy access to train stations, bus routes, local amenities, schools and the seafront.

- No Onward Chain
- Open Plan Kitchen/Living Room
- Two Well-Proportioned Bedrooms
- Off-Street Parking in a Secure Gated Car Park
- Electric Heating
- Generous Second Floor Flat
- Juliet Balcony
- Three Piece Bathroom
- Double Glazing
- Easy Reach of Major Train Lines and Bus Links

## Honiton Road

Southend-on-Sea

**£265,000**

Price Guide



# Honiton Road



This generous second floor flat boasts a modern open-plan living space, creating a bright and airy atmosphere throughout. The property benefits from a Juliet balcony, two well-proportioned bedrooms and a three-piece bathroom. Additionally, residents enjoy the convenience of off-street parking within a secure, gated car park.

Situated in a highly sought-after central location, this flat is just moments away from excellent transport links, including nearby train stations and bus routes, ensuring easy access to London and surrounding areas. A wide range of local amenities, schools and leisure facilities are within close proximity, while the scenic seafront is also just a short distance away, offering a fantastic coastal lifestyle.

## **Two Bedroom Second Floor Flat**

### **Entrance Hall**

### **Kitchen/Living Room**

23'7" x 12'1" x 15'4" x 9'6"

### **Bedroom One**

12'1" x 9'11"

### **Bedroom Two**

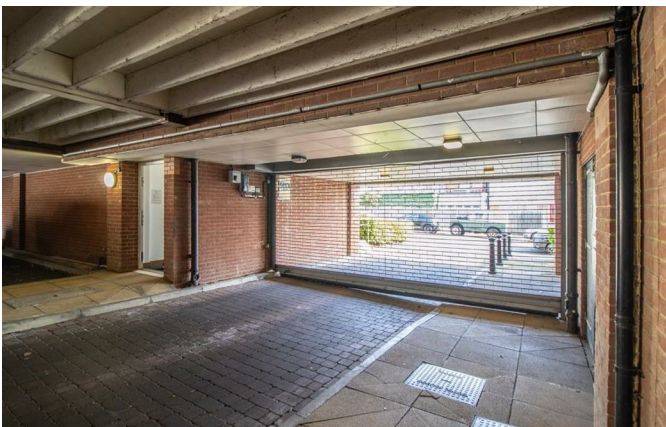
9'11" x 7'9"

### **Bathroom**

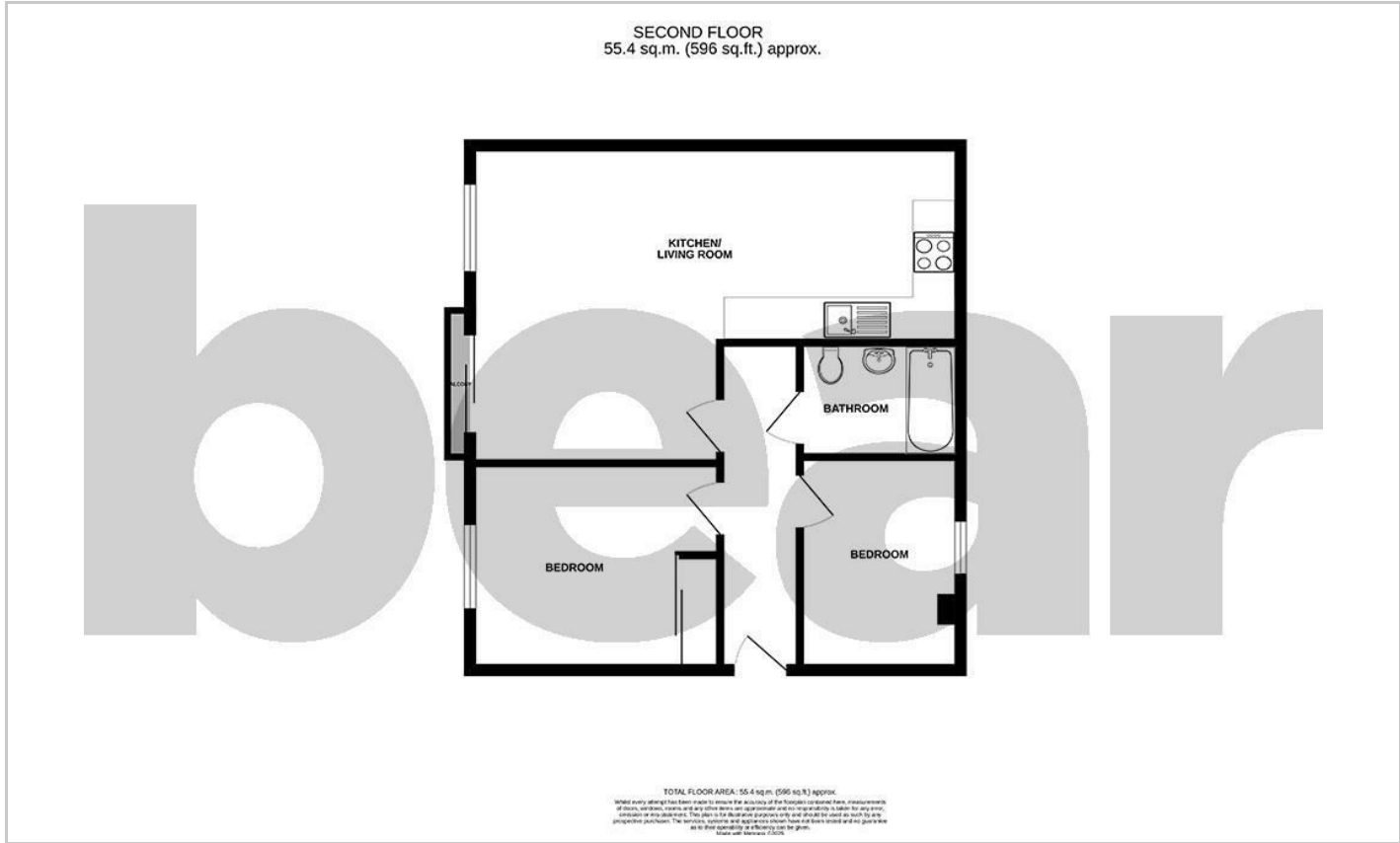
7'6" x 5'6"

### **Off-Street Parking**

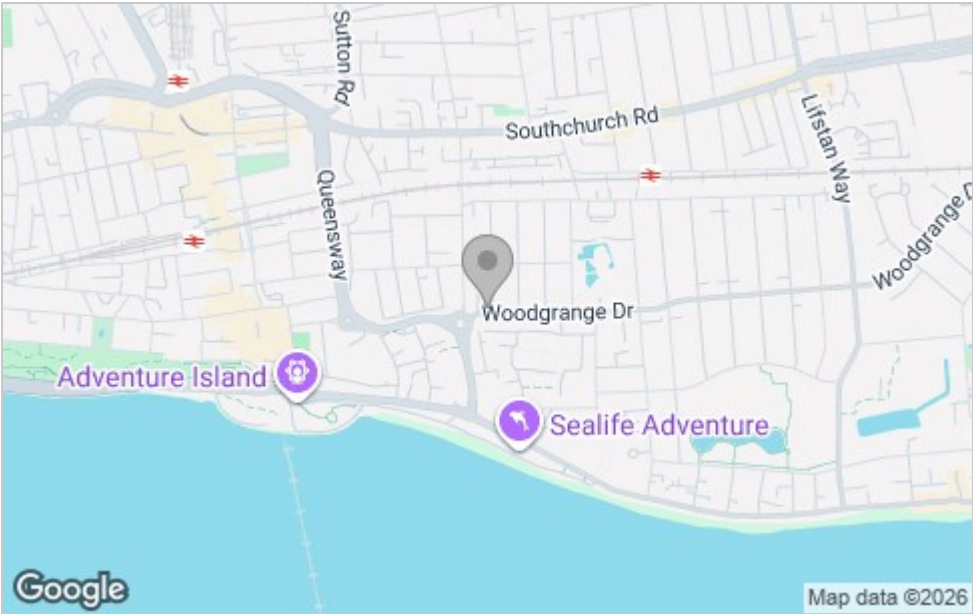




Floor Plan



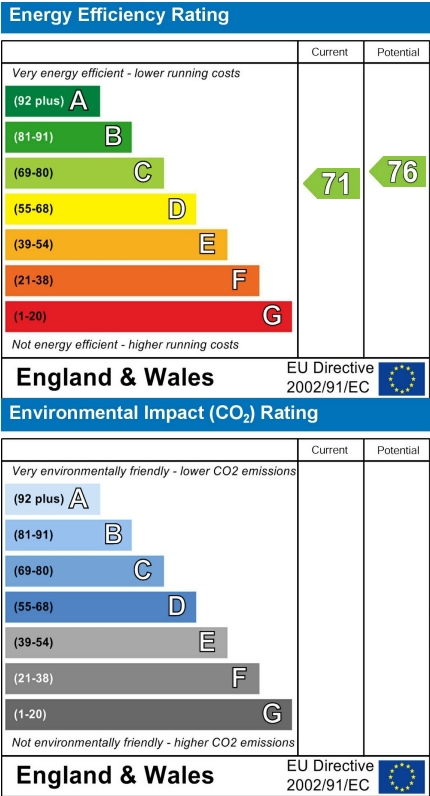
Area Map



Viewing

Please contact our Southend-on-Sea Office on 01702 811211 if you wish to arrange a viewing appointment for this property or require further information.

Energy Efficiency Graph



These particulars, whilst believed to be accurate are set out as a general outline only for guidance and do not constitute any part of an offer or contract. Intending purchasers should not rely on them as statements of representation of fact, but must satisfy themselves by inspection or otherwise as to their accuracy. No person in this firm's employment has the authority to make or give any representation or warranty in respect of the property.

204 Woodgrange Drive, Southend-on-Sea, Essex, SS1 2SJ

Office: 01702 811211 [info@bearestateagents.co.uk](mailto:info@bearestateagents.co.uk) <https://www.bearestateagents.co.uk>